

## 1. PERFORMANCE

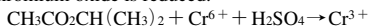
- 1) Measuring range : 20-1,000 ppm  
Number of pump strokes : 1 (100mℓ)
- 2) Sampling time : 1.5 minutes/1 pump stroke
- 3) Detectable limit : 10 ppm
- 4) Shelf life : 2 years
- 5) Operating temperature : 10 ~ 40 °C
- 6) Temperature compensation : Necessary (See "TEMPERATURE CORRECTION TABLE")
- 7) Reading : Direct reading from the scale calibrated with Ethyl acetate concentration by 1 pump stroke. The sensitivity of Isopropyl acetate is the same as Ethyl acetate.
- 8) Colour change : Yellow → Brown

## 2. RELATIVE STANDARD DEVIATION

RSD-low : 10% RSD-mid. : 10% RSD-high : 5%

## 3. CHEMICAL REACTION

Chromium oxide is reduced.



## 4. CALIBRATION OF THE TUBE

GAS CHROMATOGRAPHY

## 5. INTERFERENCE AND CROSS SENSITIVITY

Substance	Interference	Coexistence
Alcohols	Similar or Brown stain is produced.	Higher readings are given.
Esters	∕	∕
Ketones	∕	∕
Aromatic hydrocarbons	∕	∕
Paraffin hydrocarbons FIG. 1	Whole reagent is changed to Brown.	If the top of Brown stain is clear, the accuracy of readings is not affected.

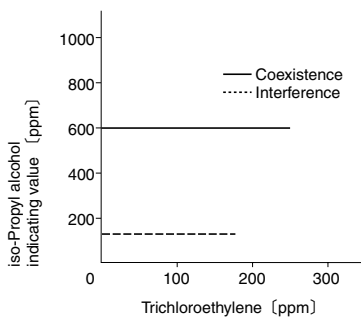


FIG.1 Influence of Trichloroethylene

## TEMPERATURE CORRECTION TABLE

Scale Readings (ppm)	True Concentration (ppm)					
	10 °C (50 °F)	15 °C (59 °F)	20 °C (68 °F)	25 °C (77 °F)	30 °C (86 °F)	40 °C (104 °F)
1,000	1,300	1,200	1,000	830	700	600
800	1,080	950	800	670	550	470
600	830	720	600	500	420	380
400	570	480	400	330	280	240
200	280	240	200	170	140	120
100	150	120	100	80	70	60
50	70	60	50	40	30	20
20	30	25	20	15	10	7