

## 1. PERFORMANCE

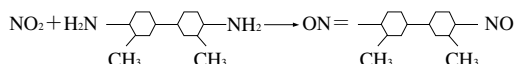
- 1) Measuring range : 20-1,000 ppm  
Number of pump strokes : 1 (100mℓ)
- 2) Sampling time : 2 minutes/1 pump stroke
- 3) Detectable limit : 5 ppm
- 4) Shelf life : 3 years
- 5) Operating temperature : 0 ~ 40 °C
- 6) Temperature compensation : Necessary (See "TEMPERATURE CORRECTION TABLE")
- 7) Reading : Direct reading from the scale calibrated by 1 pump stroke
- 8) Colour change : White → Yellowish orange

## 2. RELATIVE STANDARD DEVIATION

RSD-low : 10 % RSD-mid. : 10 % RSD-high : 10 %

## 3. CHEMICAL REACTION

By reacting with *o*-Toluidine, Nitroso-*o*-Toluidine (dyestuff) is produced.



## 4. CALIBRATION OF THE TUBE

STANDARD GAS CYLINDER METHOD

## 5. INTERFERENCE AND CROSS SENSITIVITY

| Substance         | Interference                              | ppm | Coexistence                               |
|-------------------|---|-----|---|
| Chlorine          | Similar stain is produced.                | 5   | Higher readings are given.                |
| Bromine           | ∕   | 5   | ∕   |
| Iodine            | ∕   | 5   | ∕   |
| Nitrogen monoxide | The accuracy of readings is not affected. | 10  | The accuracy of readings is not affected. |
| Ozone             | ∕   | 5   | ∕   |

## TEMPERATURE CORRECTION TABLE

| Scale Readings (ppm) | True Concentration (ppm) |              |               |               |               |               |                |  |
|----------------------|--------------------------|--------------|---------------|---------------|---------------|---------------|----------------|--|
|                      | 0 °C (32 °F)             | 5 °C (41 °F) | 10 °C (50 °F) | 15 °C (59 °F) | 20 °C (68 °F) | 30 °C (86 °F) | 40 °C (104 °F) |  |
| 1,000                | —                        | —            | —             | —             | 1,000         | 640           | 540            |  |
| 800                  | —                        | —            | —             | —             | 800           | 560           | 480            |  |
| 600                  | —                        | —            | —             | 860           | 600           | 470           | 420            |  |
| 500                  | —                        | —            | 1,000         | 700           | 500           | 410           | 380            |  |
| 400                  | —                        | —            | 840           | 540           | 400           | 350           | 330            |  |
| 300                  | —                        | 1,000        | 570           | 390           | 300           | 280           | 270            |  |
| 200                  | 1,000                    | 500          | 320           | 240           | 200           | 200           | 190            |  |
| 100                  | 200                      | 180          | 120           | 110           | 100           | 100           | 100            |  |
| 50                   | 80                       | 80           | 60            | 55            | 50            | 50            | 50             |  |
| 20                   | 20                       | 10           | 20            | 20            | 20            | 20            | 20             |  |