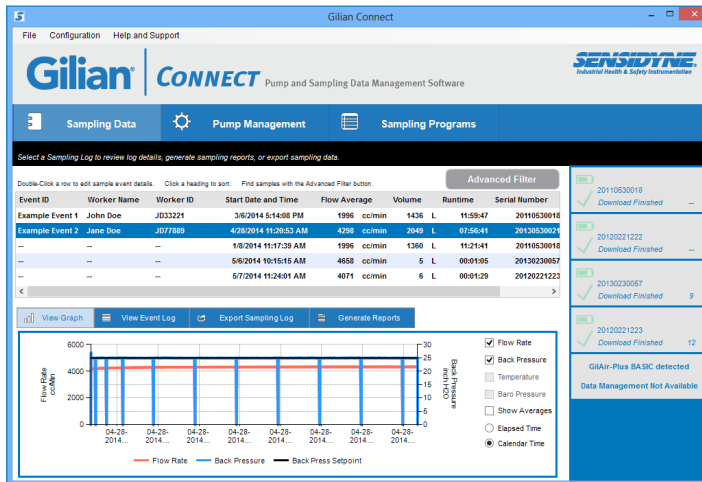


Gilian[®] | CONNECT

Pump and Sampling Data Management Software



The 'Edit Event Details' window shows 'Event Information' and 'Sample Data'. Under 'Event Information', parameters include Control Mode (Constant Pressure Hg), Flow Rate Avg. Ambient (208), Total Volume Ambient (2049), Avg. Temperature (37), Pump Run Time (6 days 07:56), Flow Rate Avg. STP (2378), Total Volume STP (1978), Avg. Pressure (261), Flow Rate Setting (26.0), Back Pressure Avg. (24.9), Pump Pre-Cal Flow (g), STP Temp Ref (77), Back Pressure Setting (26.0), and Pump Post-Cal Flow (0). The 'Sample Data' section shows four samples with details for Target Substance, Molecular Weight, Sample Method, Sample Media, Flow Rate, Sampled Volume, Lab Results, and Concentration.

The 'Sampling Programs' window shows a configuration for a program named 'NOSH XYZ'. It includes fields for Program Name, Mode (Constant Flow), Flowrate (2000 cc/min), and Description. Below is a list of program steps:

- 1 Time: 08:00 AM, Wait until 8:00 AM
- 2 Cycle: 1, This is the top of a Cycle loop.
- 3 On: 00:10, Run for 10 minutes
- 4 Off: 00:50, Stop for 50 minutes
- 5 Cycle: 8, Do steps 3 through 4, 8 times, then continue.

Gilian CONNECT is an essential tool that assists Industrial Hygienists and Occupational Health and Safety professionals to overcome the challenges of organizing air sampling data, creating sampling reports and managing pump fleets.

- Centralize sampling data for reporting, analysis, archiving and retrieval.
- Save time with reusable report templates and auto-complete data from database entries
- Enter lab result data into sampling records and quickly create customizable reports for printing, PDF e-mailing, or saving to disk
- Configure and program air sampling pumps for rapid deployment

Gilian CONNECT is the ultimate air sampling data and pump management solution that automates tasks and simplifies record administration. The application can be fully customized to user preferences including measurement units, storage of worker information, and creation of reporting templates. Gilian CONNECT will save professionals valuable time while enhancing analysis capabilities and gaining improved control over their sampling data.

Upgrade to Gilian connect at:
<http://Sensidyne.com/connect>

